

PINELLAS

Reading

	2007	2008	2009	2010	2011
Black	17.3	16.8	16.4	16.4	17
White	22	22	22	21.8	21.6
All Students	21.3	20.8	20.5	20.3	20.6

Math

	2007	2008	2009	2010	2011
Black	17.1	16.7	16.3	16.2	16.6
White	21.2	21.4	21.1	20.9	21
All Students	21.3	20.8	20.5	20.3	20

Composite Score

	2007	2008	2009	2010	2011
Black	16.7	16.3	15.8	15.7	16.2
White	21.4	21.3	21.2	21.1	21
All Students	20.7	20.3	19.8	19.7	19.9

	2007	2008	2009	2010	2011
Pinellas - Black	16.7	16.3	15.8	15.7	16.2
Pinellas - White	21.4	21.3	21.2	21.1	21
Florida - Black	16.4	16.4	16.2	16.2	16.4
Florida - White	21.6	21.6	21.6	21.7	21.8
National - Black	17	16.9	16.9	16.9	17
National - White	22.1	22.1	22.2	22.3	22.4

FLORIDA

Reading

	2007	2008	2009	2010	2011
Black	16.9	16.7	16.8	16.8	17
White	22.3	22.3	22.4	22.4	22.5
All Students	20.5	20.3	20.2	20.1	20.2

Math

	2007	2008	2009	2010	2011
Black	17	16.9	16.8	16.9	17
White	21.3	21.5	21.4	21.5	21.7
All Students	20	20	19.7	19.7	19.9

Composite Score

	2007	2008	2009	2010	2011
Black	16.4	16.4	16.2	16.2	16.4
White	21.6	21.6	21.6	21.7	21.8
All Students	19.9	19.8	19.5	19.5	19.6

BLACK/WHITE GAP

	2007	2008	2009	2010	2011
Pinellas	4.7	5	5.4	5.4	4.8
Florida	5.2	5.2	5.4	5.5	5.4
National	5.1	5.2	5.3	5.4	5.4

NATIONAL

Reading

	2007	2008	2009	2010	2011
Black	17.1	17	16.9	16.8	17
White	22.5	22.5	22.6	22.6	22.7
All Students	21.5	21.4	21.4	21.3	21.3

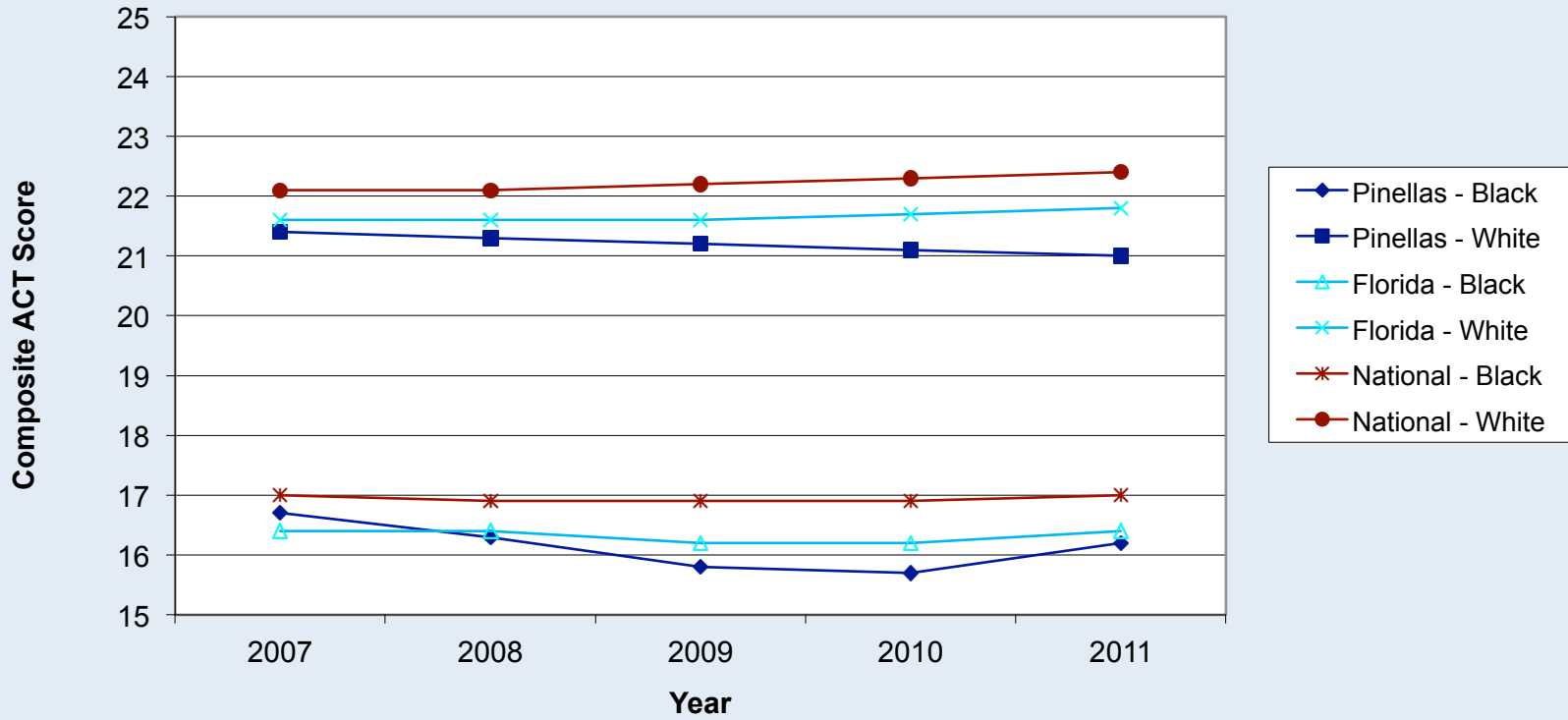
Math

	2007	2008	2009	2010	2011
Black	17	17	16.8	17.1	17.2
White	21.7	21.8	21.4	22	22.1
All Students	21	21	21	21	21.1

Composite Score

	2007	2008	2009	2010	2011
Black	17	16.9	16.9	16.9	17
White	22.1	22.1	22.2	22.3	22.4
All Students	21.2	21.1	21.1	21	21.1

ACT Trends Black - White Students



ACT Trends
Achivement Gap - Black/White Students

