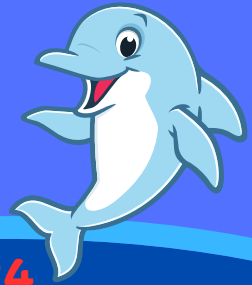




# MILDRED HELMS ELEMENTARY IB WORLD SCHOOL MESSENGER

561 Clearwater Largo Road Largo, FL 33770  
(727)588-3569 [www.pcsb.org/mildred-es](http://www.pcsb.org/mildred-es)



August 2024

## PRINCIPAL'S POINTS OF PRIDE

Dear Mildred Helms Families,

Welcome to the 2024-25 school year! Congratulations MHES Community, we earned an "A" grade from the state for our student achievement on end of the year testing. We are so proud of all our scholars, teachers, and staff that helped us earn this achievement. Congratulations to Pinellas County Schools as our district also earned their first ever "A" rating.

We appreciate all the parents who attended our Meet and Greet and linked up their FOCUS accounts to receive email messages from teachers. If you are still in need of support with FOCUS, please stop by the front office.

Communication between home and school is vital. School Messenger messages are sent out using information in FOCUS. Ensure that your phone number and email address are updated and correct. All changes can be made online by parents. We will be utilizing FOCUS Messenger for parent updates as well as agendas or folders daily. For additional information, Log into our school website to keep apprised of schoolwide information, events and calendars. Check out our school newsletters which include our monthly calendar, success stories, flyers for upcoming events and links to sites that support student enrichment through learning.

Our Title I Annual Meeting and Open House will be held on Wednesday, August 28, 2024 beginning at 5:30pm. Times will be staggered to support families with multiple children. Teachers will share grade level expectations and classroom processes. We hope you can join us for this informative meeting.

We hope you will join us throughout the year during Family Nights and other special events showcasing our amazing scholars. Together we can enhance our student experiences during the 2024-25 school year and make it the best one ever.

Thank you for your support.

Respectfully,  
Mrs. Brennan



## Mrs. Cooper's Corner

Dear Families,

Welcome Back Mildred Helms Elementary Dolphins!

I am so excited that we are kicking off another great year of learning! I am thrilled to welcome both our returning families and those new to our school community.

Communication between school and home is vital for the success of our students, so please don't hesitate to reach out with any questions or concerns. We are here to support you and your children every step of the way.

Here's to a fantastic year filled with learning, growth, and memorable experiences!

Please feel free to email me at:  
[cooperkar@pcsb.org](mailto:cooperkar@pcsb.org)

I am looking forward to seeing you  
all soon!



**Welcome back! We are looking forward to a great school year. Here is some information that will help you start the new school year:**



## **Mildred Helms Elementary IB World School Modified Uniform Dress Code**



All students must adhere to the requirements of the modified uniform policy as followed:

**Shirts:** solid-colored, collared polo-style shirt in light blue, navy blue and red only. Shirts should be free from design or logos greater than a quarter in size. Mildred Helms School spirit shirts may be worn on Fridays.

**Bottoms:** khaki or navy colored uniform bottoms. This includes shorts, pants, capris, skorts, skirts, jumpers (shorts or leggings of the **same** solid color may be worn underneath skirts/jumpers). Shorts should follow Pinellas County dress code of mid -thigh length or longer. NO Gym shorts, leggings, jeggings, yoga pants or jeans.

**Closed toed shoes appropriate for outdoor play should be worn.**

Uniforms can be found throughout Pinellas County at local retail stores.

## **2024-2025 School Hours**

**9:00am - 3:10pm**

**Breakfast 8:35am - 8:55am**

Gates open at 8:35am.

Students must be supervised by a parent prior to 8:35am.

Students should be in class by 9:00am.

Tardy bell rings at 9:00am

**Office Hours**

8:30am - 3:45pm

## **Car Circle Info**

- The car circle is located on the north side of the campus off of Clearwater-Largo Rd.
- The car circle entrance is the northernmost drive of the campus.
- There are two lanes in the car circle that will merge into one lane for curbside pick-up. Please be respectful of other drivers at the merge.
- Remain in your car at all times. Staff and safety patrols will assist students at curbside drop-off and pickup.
- Refrain from cell phone usage.
- No smoking is allowed on School Board property, including the car circle and parking lots.
- Dismissal begins at 3:10pm.

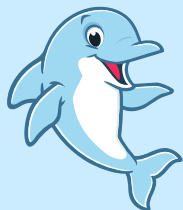


# MHES COMMUNITY



## PTA NEWS!

The 2024-2025 Parent Teacher Association (PTA) Board is excited to welcome everyone to the new school year!



Meet your 2024 - 2025 PTA Board!  
 President - Alicia Gier [president@mildredhelmspta.org](mailto:president@mildredhelmspta.org)  
 Treasurer - Kelly Hamilton [treasurer@mildredhelmspta.org](mailto:treasurer@mildredhelmspta.org)  
 Secretary - Ashley Sorter [secretary@mildredhelmspta.org](mailto:secretary@mildredhelmspta.org)

PTA is sponsoring a membership drive through September 9th. The class in each grade with the most PTA members by September 9th will win a popcorn party!

If you haven't already joined the PTA, please know the support through your membership is important to our school to help us bring quality events and programs for all of our MHES students. Please email the PTA Board for volunteer opportunities, and join the PTA here!  
<https://mildredhelmspta.givebacks.com/store>

Check back for PTA General Meeting and Event dates!



## Connect with PTA!



Memberships  
T-shirts  
Bundles  
Donations



### Mildred Helms Elementary IB World School 2024-2025 Suggested Supply Lists



#### Kindergarten

*Please label all supplies with your child's name, including clothing.*

- Zippered backpack**  
(large enough to carry a large library book, no rolling backpacks, please)
- Complete change of uniform clothing in a gallon size baggie**
- 1-set of headphones (with USB plug-ins) in labeled baggie
- 1 Plastic pencil box with jumbo pencils and jumbo crayons
- 3 wide ruled composition notebooks
- 4 glue sticks
- Reusable water bottle

**Class Wish List:**

- Variety of baggies
- Boxes of tissue
- Thick & thin markers
- Hand sanitizer & soap
- Dry erase markers
- Healthy Snacks
- Disinfecting Wipes
- Paper towels
- Playdough

#### 1st Grade

*Please label all supplies with your child's name.*

- 1- set of headphones (with USB plug-ins) in labeled baggie
- One 1" binder with clear front pouch
- Glue sticks
- Pencil box with packs of pencils
- 2 boxes of 24 count crayons
- Black expo markers (4 pack)
- One black composition notebook
- Reusable water bottle

**Class Wish List:**

- Variety of baggies
- Boxes of tissue
- Hand sanitizer & soap
- Black dry erase markers
- Lined index cards

#### 2nd Grade

*Please label all supplies with your child's name.*

- 1- set of headphones (with USB plug-ins) in labeled baggie
- One 1" binder with clear front pouch
- 2 composition notebooks
- 2 Folders
- Pencils & Pencil Box
- 3 Dry erase markers
- 2 boxes of 16-count crayons
- Pencil top erasers
- Reusable water bottle

**Class Wish List:**

- Sticky notes
- Dry erase markers
- Boxes of tissue
- Hand sanitizer & soap
- Quart & gallon baggies

**Mildred Helms Elementary IB World School  
Modified Uniform Dress Code**

All students must adhere to the requirements of the modified uniform policy as followed:

**Shirts:** solid-colored, collared polo-style shirt in light blue, navy blue and red only. Shirts should be free from design or logos greater than a quarter in size. Mildred Helms school spirit shirts may be worn on Fridays.

**Bottoms:** khaki or navy colored uniform bottoms. This includes shorts, pants, capris, skirts, shirts, jumpers (shorts or leggings of the same solid color/length may be worn underneath skirt/jumpers). Shorts should follow Pinellas County dress code of mid-thigh length or longer. NO Gym shorts, leggings, jeggings, yoga pants or jeans.

Closed toed shoes appropriate for outdoor play should be worn. Uniforms can be found throughout Pinellas County at local retail stores.



### Mildred Helms Elementary IB World School 2024-2025 Suggested Supply Lists



#### 3rd Grade

*Please label all supplies with your child's name.*

- 1- set of headphones (with USB plug-ins) in labeled baggie
- 1- 1" white binder (Clear front cover)
- 3-Composition notebooks
- 1- 4 -pack black dry erase markers
- 1-Pencil box with pencils, glue sticks, crayons/colored pencils, scissors
- 4-Pocket folders with prongs (1-red, 1-blue, 1-green, and 1-yellow)
- Reusable water bottle

**Wish List:**

- Boxes of tissues
- Hand Sanitizer and soap
- Sandwich and gallon size baggies

#### 4th Grade

*Please label all supplies with your child's name.*

- 1- set of headphones (with USB plug-ins)
- 5 composition notebooks
- Pencil box with crayons, pencils, colored pencils, markers
- One 1" binder with pockets
- 4 folders with pockets and prongs
- 1 pack of glue sticks
- 1 pack of dry erase markers
- 1 pair of scissors
- Pencil cap erasers
- Reusable water bottle

**Class Wish List:**

- Hand sanitizer & soap
- Post-it notes
- Baggies
- Boxes of tissue
- Glue sticks
- Dry erase markers

#### 5th Grade

*Please label all supplies with your child's name.*

- 1- set of headphones (with USB plug-ins) in labeled baggie
- 4 composition notebooks
- Pencil box/pouch with crayons, pencils, colored pencils, markers, glue sticks
- 1 pack of dry erase markers
- One 1" binder with pockets
- 4 folders with prongs & pockets
- Reusable water bottle

**Class Wish List:**

- Hand sanitizer & soap
- Boxes of tissue
- Sticky notes
- Dry erase markers
- Markers
- Glue sticks
- Headphones



**First Day: Monday, August 12, 2024**  
 School Hours 9:00a.m.-3:10p.m.  
 Breakfast 8:35-8:55a.m.

Stay up to date with everything Mildred Helms by visiting our website at [pcsb.org/mildred-es](http://pcsb.org/mildred-es).



## Book of the Month



## LEARNER PROFILE OF THE MONTH

### Risk-Taker

We approach uncertainty with forethought and determination; we work independently and cooperatively to explore new ideas and innovative strategies. We are resourceful and resilient in the face of challenges and change.

### We are a Risk-Taker when...

- we try new things (food, activities, genres of books).
- we are brave and meet new friends.
- we show confidence and share new ideas in class.
- we are able to solve problems in new ways.

We are  
**RISK-TAKERS!**



We are brave when we try  
new things.



**¡Tonamos  
RIESGOS!**

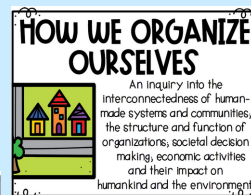
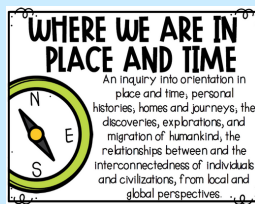
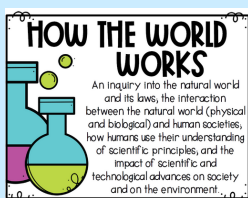


Nos esforzamos cuando  
intentamos hacer  
algo nuevo.



**As an IB World School, our curriculum is developed around local and global contexts.**

**We organize our Units of Inquiry into 6 different themes:**





## Counselor's Corner

Hello! My name is Ann Stager and I am so excited to be your new School Counselor. I am a Pennsylvania native and have been in Florida for over a year now. I am loving all the sunshine and outdoor activities this beautiful state has to offer.

In Pennsylvania, I worked closely with individuals in the community setting as well as the school setting, helping to improve mental health and physical well-being. I have worked in Human Services Organizations since I have graduated from East Stroudsburg University, PA and Centenary College in NJ with my Masters in School Counseling.

My goal is to make each and every student feel special and loved while helping them to acknowledge their special talents and gifts. I look forward to providing classroom lessons on social/emotional learning, career exploration, and coping and resiliency skills. Please feel free to reach out to me with any concerns you may have about your child at [stagera@pcsb.org](mailto:stagera@pcsb.org) or call the school directly.



[www.pcsb.org/safetyconcern](http://www.pcsb.org/safetyconcern)

## Ms. Coleman's Book Nook



If you are a fifth or fourth grader who checked out a laptop over the summer, please bring your laptop AND charger (if you checked one out) back to school on Monday, August 12th. Hope you had a wonderful summer! Looking forward to a fun-filled school year reading great books together!

Ms. Coleman



## Mr. Kiebzak's Artists' Loft

Hello parents! I am really looking forward to my 4th year teaching Art at Mildred Helms! I'm excited to lead classes full of confident, creative IB visual artists! Along with all of our units of study, we will be learning about many different art styles/eras as well artists and the art they created. Every grade level will be completing 1-3 projects in each of the following units of study: drawing, painting, printmaking, digital media, mixed media, ceramics (clay), and sculpture (paper/cardboard etc.).

We will be working hard to hit all the learning targets while having fun and being creative. This year there are 9 different Art exhibitions that will be held at art museums and galleries throughout the county. These are some amazing opportunities that they have to get their wonderful work they do in class, hang in these exhibitions!!! With exhibitions and the end of the year schoolwide Art show at Mildred Helms, I may be hanging on to some of your child's art even after it is completed.

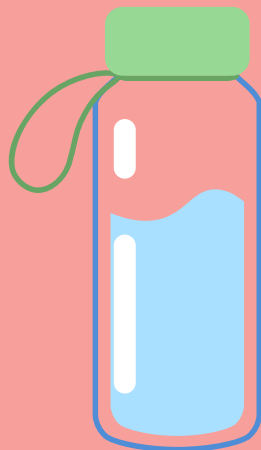
If you have any questions please reach out at [kiebzakj@pcsb.org](mailto:kiebzakj@pcsb.org)



## Coaches Playbook

The P.E. staff is looking forward to another successful year with the students!

Please be sure to bring a reusable water bottle with your name on it.





## Mrs. Clemens' Musical Notes

Welcome back to the MHES music room!

I'm looking forward to seeing our Kindergarten through 5th graders in music class each week! Get ready to sing and play!

Remember, Chorus will be offered to all 4th and 5th graders! We meet once a week for rehearsal during the school day and have several performances throughout the school year. How do you sign up? A flyer and permission slip will be sent home at the beginning of the year for parents to fill out and

return. Keep a look out!

Thanks! -Mrs. Clemens



## Senora Carlson's Cafe Hola



PYP SPANISH CLASS SYLLABUS **AUGUST-SEPTEMBER 2024-25**  
UNIT 1 "ESTUDIANTES AVENTUREROS"

### ESPAÑOL LEARNING TARGETS

WL.K12.NM.3.7

Understand and respond appropriately to simple directions

- **LISTENING** - I can understand the day of the week. I can understand the numbers 1 to 10 out of order. I can understand more school vocabulary. I can understand my teacher's directions.
- **SPEAKING** - I can name more classroom objects. I can say the day of the week we're talking about.

## VOCABULARIO

### Students

- Los estudiantes (Students)
  - El niño, Los niños (Boy-Boys)
  - La niña, Las niñas (Girl-Girls)
- Greetings/Introduction
- Buenos días – Good Morning
  - Buenas tardes – Good afternoon
  - Buenas noches – Good Evening/Good night
  - Hola - Hello
  - Me llamo... – My name is...

### Materiales de la Escuela (School Supplies):

- El pupitre (desk)
- La mesa (table)
- La silla (chair)
- La computadora (computer)
- La sala / El salón / El aula (classroom)
- La clase (class)
- El mapa (map)
- Las tijeras (scissors)
- Los lápices (pencils)
- Los crayones (crayons)
- Los papeles (papers)
- La Mochila (backpack)

### Números (Numbers):

- 1- uno
- 2-dos
- 3-tres
- 4-cuatro
- 5-cinco
- 6-seis
- 7-siete
- 8-ochos
- 9-nueve
- 10-diez

### Los días de la semana (Days of the Week):

- Lunes (Monday)
- Martes (Tuesday)
- Miércoles (Wednesday)
- Jueves (Thursday)
- Viernes (Friday)
- Sábado (Saturday)
- Domingo (Sunday)
- El día Hoy es \_\_\_\_\_ (Today is....)
- Ayer fue \_\_\_\_\_ (Yesterday was...)
- Mañana será \_\_\_\_\_ (Tomorrow will be...)

### Teacher Directions

- Siéntate/ siéntanse (sit down)
- Levanta la mano (raise your hand)
- Párate / Párense / Levántate / Levántense (Stand up)
- Escucha / Escuchen (Listen)
- Repite / Repitan (Repeat)
- ¿Puedo ir al baño? (May I go to the bathroom?)
- ¿Puedo tomar agua? (May I drink water?)
- ¿Puedo usar un lápiz? (May I use a pencil?)





## Mildred Helms Elementary



### Welcome Families to our 2024-2025 school year!

I am Cheryl Hauburger, Mildred Helms Elementary Family & community Liaison.

Phone: 727-588-3576 Email: haubgerc@pcsb.org

I look forward to working with you as a returning or new volunteer. All volunteers must be registered or activated before volunteering.

Volunteers and community partners make a huge difference throughout the school year. There are lots of Volunteer Opportunities for you to be an involved.

### Returning Volunteers



Please re-activate your volunteer status in the volunteer system

Please use the Google Chrome browser and go to: [heeps://focus.pcsb.org/volunteer](https://focus.pcsb.org/volunteer)

Enter your username and password: User ID: **V.last name, first initial**

**Example: v.smithk**

Password: Your last name (Capitalize the first letter only) followed by the 4-digit

**Birth Year Example: v.Smith1975**

### Brand New Volunteers



Please complete the online volunteer registration form. You will need to upload your government issued photo ID. Your applications will be processed through the Office of Strategic Partnerships of Pinellas County Schools. **You will receive an email approval** with a user ID and password. This will be used to log your volunteer hours.

Volunteer Registration: [www.pcsb.org/volunteerregistration](http://www.pcsb.org/volunteerregistration)

### Volunteers Opportunities

Walk Your Child to School Day: Wednesday, October 9

Great American Teach In: Wednesday, November 13

PTA, Book Fair, Field Trip Chaperone, Media Center, Picture Day, and Lunch Pal Mentor

# MHES CALENDAR



## August 2024

Sunday	Monday	Tuesday	Wednesday	Thursday	Friday	Saturday
				1	2	3
4	5	6	7	8 <b>Meet &amp; Greet</b> 8:30am - 9:30am 	9	10
11	12 <b>First Day for Students!</b> 	13	14	15	16	17
18	19	20	21	22	23	24
25	26	27	28 <b>Open House</b>  Title 1 Annual Meeting	29	30	31



Visit us at <https://www.pcsb.org/mildred-es>  
for the most up to date information!

