



## SUPPORTING PINELLAS STUDENTS SINCE 2004

### What is the Referendum?

- Since 2004, the Pinellas County Schools Referendum has supported the recruitment and retention of quality teachers; strengthened reading, music and art programs; and provided up-to-date technology.
- Pinellas County voters have overwhelmingly supported renewals of the tax since 2004.
- An independent committee (ICROC) oversees the distribution of funds to ensure that money is spent as voters intended.



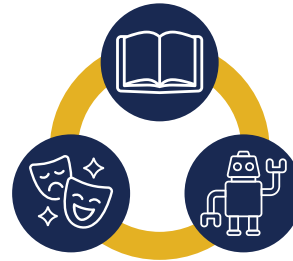
Each year, thousands of students participate in Referendum-funded field trips to museums and art centers.

### How have Referendum funds been used?

2022-23 Referendum Annual Report



\$44.4 million teacher salaries; \$5,734 per teacher



\$11.1 million reading, arts, technology



\$4.6 million charter schools, as required by law



The Referendum has supported teacher salaries since 2004, impacting nearly 100,000 students each year.



**Every penny collected through the Referendum is locally controlled and benefits Pinellas County teachers and students.**

The Referendum for Pinellas County Schools will be on the ballot for citizen vote on November 5, 2024

[pcsb.org/referendum](https://pcsb.org/referendum)



# CREATING NEW OPPORTUNITIES FOR PINELLAS STUDENTS

## What is proposed for the 2024 Referendum?

- Continue quarterly independent citizens committee oversight of the referendum and remain good stewards of the funding
- Ballot language with millage change to 1.0 mill, consistent with surrounding counties
- Continue the teacher salary supplement, and art, music, technology and reading programs
- Add a salary supplement for all support staff, including nurses, bus drivers, cafeteria workers, classroom aides, and district security personnel

## How do current school taxes compare with nearby counties?

County	Operating Millage	Sales Tax for Schools (Capital Projects)	Impact Fees for Schools (Capital Projects)
Hernando	1.0 mill	Yes, ½ cent	Yes
Hillsborough	1.0 mill failed in 2022; will be on ballot in 2024	Yes, two sales tax, ½ cent and ⅓ cent	Yes
Manatee	1.0 mill	Yes, ½ cent	Yes
Pasco	1.0 mill	Yes, ⅔ cent	Yes
Pinellas	0.5 mill	No	No
Sarasota	1.0 mill	Yes, ¼ cent	Yes

## Proposed Impact

Based on the 2023-24 tax roll



**Teacher Salary Supplement**

**\$11,081**

2025-26

**Support Salary Supplement**

**\$2,910**

2025-26

**Funding for Art, Music, Technology & Reading**

**\$18.7 m**

2025-26

**Funding for Charters**

**\$10 m**

2025-26

The Referendum for Pinellas County Schools will be on the ballot for citizen vote on November 5, 2024

[pcsb.org/referendum](https://pcsb.org/referendum)